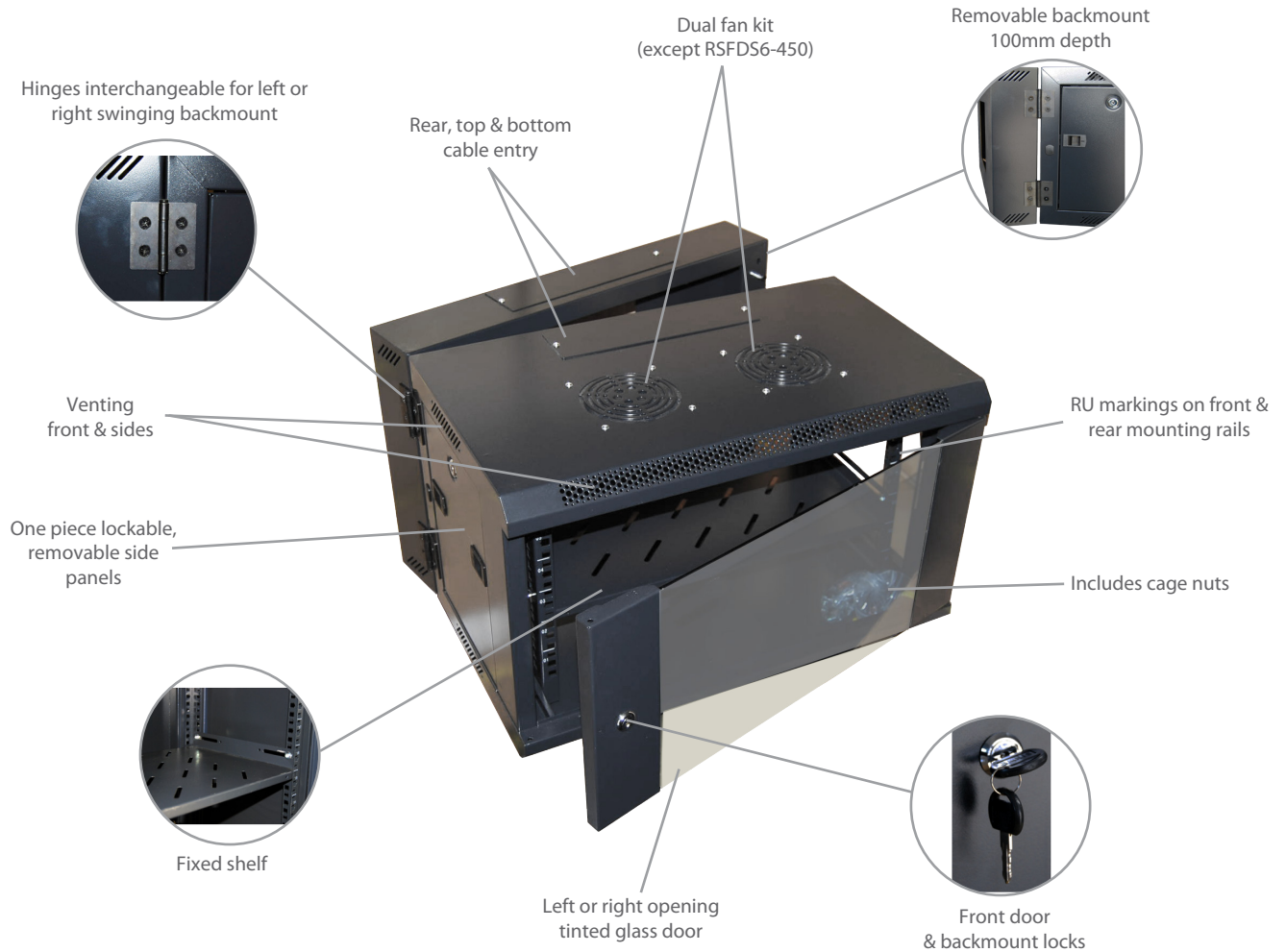


D Series 19" Swing Frame Wall Mounted Cabinets - Reversible Backmount

FEATURES

- Max loading: 60kg
- Supplied complete, no assembly required
- Gloss black colour, easy clean surface
- Material: SPCC quality cold rolled steel
- Thickness: Square hole strips 2.0mm, others 1.2mm
- Compatible with 19" International Standard and Metrical & ETSI standards
- Surface Finish: Degrease, acid pickling, rust prevention and parkerizing pure water cleaning, static electricity plastic painting
- Complies with ANSI/EIA RS-310-D, IEC297-2, DIN41491; PART1, DIN41494; PART7, GB/T3047.2-92 standards
- 2 Year Warranty. Subject to use within the static loading specifications, operation within normal environmental conditions and adequate and appropriate mounting installation



Model Code	DxHxW	Capacity	Includes	M ³	Kg
RSFDS6-450	450 x 368 x 600mm	6RU	1x Fixed Shelf, 10x Cage Nuts	0.19	23
RSFDS6	550 x 368 x 600mm	6RU	2x Fans, 1x Fixed Shelf, 10x Cage Nuts	0.16	23
RSFDS9	550 x 501 x 600mm	9RU	2x Fans, 1x Fixed Shelf, 10x Cage Nuts	0.25	26
RSFDS12	550 x 635 x 600mm	12RU	2x Fans, 1x Fixed Shelf, 10x Cage Nuts	0.31	31
RSFDS12-600	600 x 635 x 600mm	12RU	2x Fans, 1x Fixed Shelf, 10x Cage Nuts	0.33	34
RSFDS18	550 x 901 x 600mm	18RU	2x Fans, 1x Fixed Shelf, 10x Cage Nuts	0.42	34
RSFDS18-600	600 x 901 x 600mm	18RU	2x Fans, 1x Fixed Shelf, 10x Cage Nuts	0.46	43
RSFDS24	550 x 1167 x 600mm	24RU	2x Fans, 1x Fixed Shelf, 10x Cage Nuts	0.54	50
NEW RSFDS24-600	600 x 1167 x 600mm	24RU	2x Fans, 1x Fixed Shelf, 10x Cage Nuts	0.58	52
RSFDS27-600	600 x 1365 x 600mm	27RU	2x Fans, 1x Fixed Shelf, 10x Cage Nuts	0.64	56